

منطقة حولي التعليمية

اختبار نهاية الفترة الدراسية الأولى

العام الدراسي 2020/2019م

الصف الثامن

نموذج إجابة اختبار مادة

اللغة الإنجليزية

الإدارة العامة لمنطقة حولي التعليمية
التوجيه الفني للغة الإنجليزية

امتحان نهاية الفترة الدراسية الأولى – الصف الثامن – 2019 / 2020

المجال الدراسي: اللغة الإنجليزية – الزمن: ساعتان

مكونات الامتحان: (المفردات – الاستيعاب المقروء – القواعد – التعبير الكتابي)

(Total 60 Marks)

30

I- Reading (30 Marks)A- Vocabulary (14 Marks)

14

A. From a, b, c and d, choose the most suitable word that best completes each of the following sentences: (4X2=8 Marks)

01. My father.....to buy me a new iPhone if I get good marks.
a. lacked b. spoiled c. inhaled d. **promised**
02. Kuwait is far from the, but it is very hot in summer.
a. hardship b. **equator** c. gravity d. session
03. We were allat hearing a little boy reciting the Holy Quran.
a. stingy b. voluntary c. **astonished** d. fictional
04. Football attracts largeof people to attend the matches in stadiums.
a. **crowds** b. schedules c. themes d. barriers

B. Fill in the spaces with the most suitable words from the list below: (4X1½=6 Marks)

extremely / inspired / securely / donated / quitted

05. You'd better fasten the seatbelt ...**securely**... before you drive your car.
06. The exam was ...**extremely**...difficult but I could answer all the questions.
07. Many charities ...**donated**... a lot of money to the poor during Ramadan.
08. Juri AlAzmi's success ...**inspired**... people with disability to overcome difficulties.

B- Reading Comprehension (16 Marks)

16

- Read the following passage carefully, then answer the questions below:

Students from two schools, The City School in Nigeria and Heath Land School in the UK, recently took part in a project to compare their education and find out about student life in a very different country. As expected, they found many differences but also a few things that are **similar**.

The City School is in a district just outside Nigeria's capital, Abuja. Heath Land School is in a quiet suburb not far from central Edinburgh, the capital of Scotland.

Although The City School receives financial help from the government, students still have to pay school fees. It is hard to find the money sometimes and quite a few parents struggle to keep their children in school. Unlike the Nigerian school, students at Heath Land School only have to buy their uniforms and pay for some extra activities.

Teachers at The City School are proud of their library books, sports playgrounds and science laboratories. **They** say that there is not a school in the area that can match it. The school concentrates on traditional subjects like Mathematics, Physics and Chemistry because this will make it easier for students to get into a good profession.

Heath Land School recently became an art college. This means that in addition to subjects like English and Mathematics, the school also offers lessons in Drama and Music as options for all students.

Students in both schools found the project very interesting and hope to do further joint projects in the future.

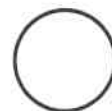
A. From a, b, c and d, choose the most suitable answer: (6X2=12 Marks)

09. Which of the following is the best title of the text?

- a- A School Day
- b- A School Land
- c- A School Finance
- d- A School Educational Project

10. The **Opposite** of the underlined word “**similar**” in the 1st paragraph is:
- a- easy
 - b- equal
 - c- **different**
 - d- interesting
11. The underlined word “**they**” in the 4th paragraph refers to:
- a- Books
 - b- **Teachers**
 - c- Playgrounds
 - d- Laboratories
12. According to the text, which of the following sentences is **TRUE**?
- a- Students in Health Land School have to pay the school fees.
 - b- Students in The City School receive art lessons.
 - c- Students in Nigeria go to the Health Land School.
 - d- **Students in the Health Land School pay for the school uniform.**
13. What difficulties do children face to stay in The City School?
- a- They have to study drama and music.
 - b- They need to find a good profession.
 - c- **Their parents struggle to pay the school fees.**
 - d- Their parents get financial help from the government.
14. What is the writer’s purpose of writing this text?
- a- **To compare between two systems of education**
 - b- To show us a comparison between two cities
 - c- To tell us about school subjects in Scotland
 - d- To advise us to build schools near big cities

B. Answer the following questions: (2x2=4 Marks)



15. Why does the City School concentrate on traditional subjects?

Because this will make it easier for students to get into a good profession.

16. What facilities are teachers at the City School proud of?

Teachers at The City School are proud of their library books, sports playgrounds and science laboratories.

Any reasonable answer with reference to the passage is accepted.

II- Writing (30 Marks)

30

A- Grammar (14 Marks)

14

A. Choose the correct answer between brackets: (4X2=8 Marks)

17. (**Doing** – Do – Does) any physical activity is really important. While we (are practising – **were practising** – practise) sport, my friend came to my house. Some people (aren't gaining – weren't gaining – **haven't gained**) any weight for years because they eat healthy food. They also need to join a club (**so that** – in order to – to) they can be fit.

B. Do as shown between brackets: (3X2=6 Marks)

18. My brother worked hard to achieve his goals,.....?

(Add a tag question)

didn't he

19. The wind broke the window yesterday. (Make passive)

The window was broken (by the wind) yesterday.

20. The manager has stayed in the company for 20 years. (Ask a question)

How long has the manager stayed in the company?/ Who has stayed in the company for 20 years?/ Where has the manager stayed for 20 years? / How many years has the manager stayed in the company?

B- Writing (16 Marks)

16

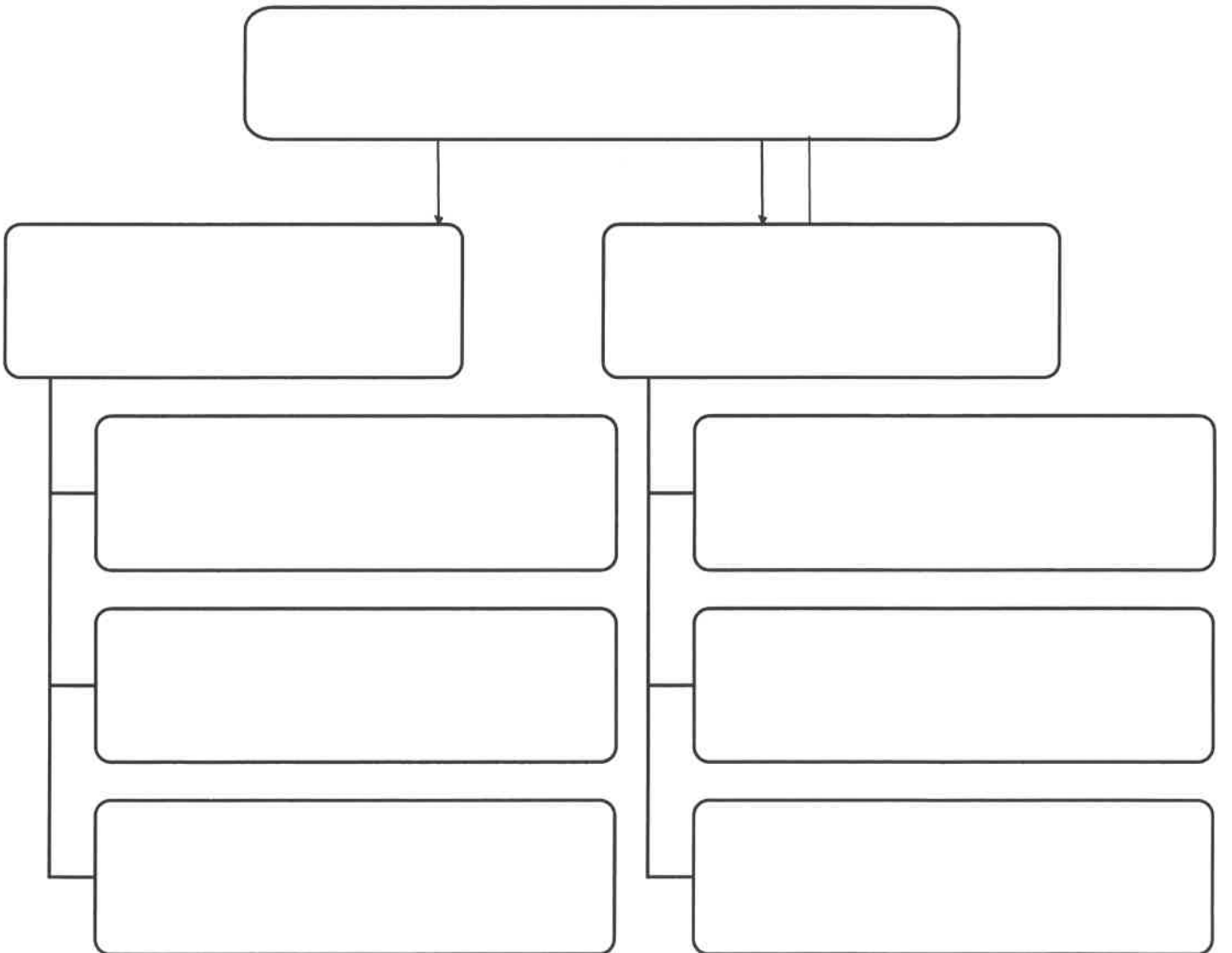
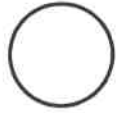
- Write on the following topic:

Life is a challenge that can't be taken easily. We have to work hard to succeed in this challenge.

Plan and write a report of two paragraphs (not less than 10 sentences) about the challenges the disabled people face and how we can help them.

Your writing should include (a topic sentence, supporting details and a conclusion).

The Plan (2 Marks)



The Topic (14 Marks)



Planning	Exposition of ideas & coherence	Paragraphing and number of sentences	Gr.	Sp.	Handwriting & punctuation	Changing format	Total
2	8	2	1	1	2	-2	16

- 2 marks to be deducted from the total mark for changing the format.
- Off point planning / topic receives **ZERO**.

انتهت الأسئلة

مع تمنياتنا لكم بالنجاح